

# MAC Corporation

Quality by Design

## Stationary Compactors – Mighty Mac Series

The Mighty Mac 2 YD series 220 and 2.5 YD series 250 compactors provide high compaction forces in a shorter, space saving footprint. Up to 40% shorter than standard compactors, the 220 and 250 have more than 54,000 and 62,000 lbs. of maximum packing force respectively.



Mighty Mac 220 Series



Mighty Mac 250 Series

These heavy duty body assemblies are 50% stronger than others on the market. Solid 3/8" plate side walls are further reinforced with structural tube top rails, 1" x 3" solid horizontal bar and 3" structural channel verticals. The 8" x 6" x 3/4" breaker bar is supported by 4" x 3" x 1/4" structural steel tubing and gusseted with 1/2" thick plate. This extra rugged construction totally eliminates side wall deformation even under extreme conditions.

### Standard Features

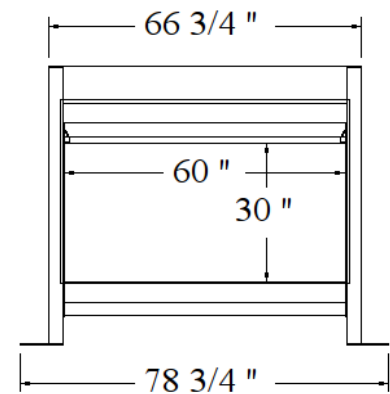
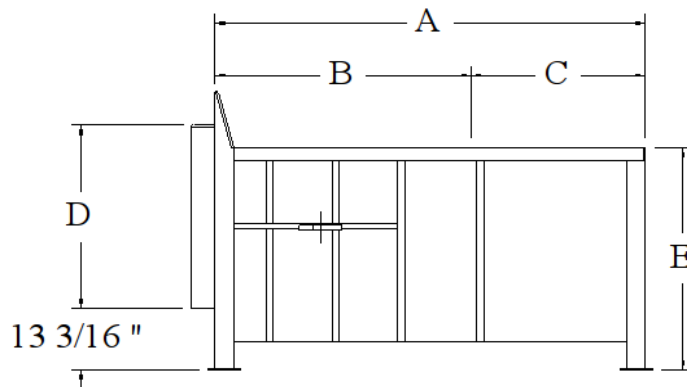
Key-lock Start Switch	Power Unit Factory Ready for 208-230-460 Volt 3 phase	Solid State Motor Starter Overload
Power Unit Weather Cover	Red Mushroom-head Stop Button	Adjustable 9-45 Amp
Reverse Push Button	Automatic Motor Starter Reset	NEMA 12/13 Panel Box

The heart of the Mac 220 and 250 compactors is the hydraulic power unit. Only top of the line, off the shelf components are utilized to deliver outstanding reliability and prevent "vendor lock in" for our customers.

Motor:	Baldor 208/230/460 volt 3 phase high efficiency
Hydraulic pump:	Vickers ultra quiet vane type
Valve:	Yuken softshift
Fullness signaling pressure switch:	Barksdale
Hydraulic hose, connectors and fittings:	Weatherhead
Push buttons and switches:	General Electric
Motor starter and overload:	Eaton
PLC controller:	Eaton
Control transformer:	Oversize, 208/230/460 volt input with low DC secondary voltage for operator controls

## Specifications and Dimensions – Mighty Mac Series

	MAC 220	MAC 250
<b>Mfr. Rating</b>	2 cubic yards	2.5 cubic yards
<b>Industry Rating</b>	1.44 cubic yards	1.83 cubic yards
<b>Clear Top Opening</b>	58" x 42"	58" x 54"
<b>Hydraulic Cylinders</b>	(2) 4 ½" bore x 2 ½" rod	(2) 4 ½" bore x 2 ½" rod
<b>Ram Penetration</b>	14"	14"
<b>Packing Force</b>	Normal: 50,300 lbs. Maximum Pack-Out: 54,300 lbs.	Normal: 58,300 lbs. Maximum Pack-Out: 55,100 lbs.
<b>Ram Face PSI</b>	Normal: 27.94 PSI Maximum: 30.16 PSI	Normal: 32.38 PSI Maximum: 34.66 PSI
<b>Hydraulic Pressure</b>	Normal: 1850 PSI Maximum: 2000 PSI	Normal: 2150 PSI Maximum: 2300 PSI
<b>Ram Face Dimensions</b>	30" x 60"	30" x 60"
<b>Cycle Time</b>	51 seconds	48 seconds
<b>Motor</b>	10 H.P. TEFC	15 H.P. TEFC
<b>Pump</b>	10 GPM vane	13 GPM vane
<b>Frame Floor</b>	3/8" plate	3/8" plate
<b>Frame Sides</b>	3/8" plate	3/8" plate
<b>Breaker Bar</b>	8" x 6" x 3/4" angle	8" x 6" x 3/4" angle
<b>Ram Face</b>	1/2" plate	1/2" plate
<b>Ram Floor</b>	1/2" plate	1/2" plate
<b>Ram Top</b>	1/4" plate	1/4" plate
<b>Ram Sides</b>	1/4" plate	1/4" plate
<b>Ram Guides</b>	UHMWPE	UHMWPE



Dimensions	MAC 220	MAC 250
A	73"	92"
B	42"	54"
C	31"	38"
D	39-9/16"	39-9/16"
E	48"	48"



4717 Massachusetts Avenue  
 Indianapolis, Indiana  
 317-545-3341  
 800-447-5205  
 Fax: 317-545-8760